



Material Safety Data Sheet

3,3'-Diaminodiphenyl sulfone

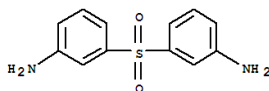
Section 1 – CHEMICAL PRODUCT AND COMPANY IDENTIFICATION

Product Name	3,3'-Diaminodiphenyl sulfone
Trade Name	3,3'-DDS
Molecular Formula	C ₁₂ H ₁₂ N ₂ O ₂ S
Company Identification	Showa Kako Nissho Bldg. 6F 2-2 Dojima 1-chrome Kita-ku, Osaka 530-0003 Japan

Section 2 – COMPOSITION/INFORMATION ON INGREDIENTS

CAS	599-61-1
EINECS	209-967-5

Chemical Structure:



Chemical Name	3,3'-BIS(AMINOPHENYL) SULFONE DI(3-AMINOPHENYL) SULFONE
----------------------	--

Distinction between single and mixed Ingredient and content	Single 98% min
--	-------------------

Section 3 – HAZARDS IDENTIFICATION

Name of Classification	Not classified
Emergency Overview	Irritating to eyes, respiratory system and skin
HMIS Classification	Health Hazard: 2 Flammability: 0 Physical Hazards: 0

Potential Health Effects

Inhalation	May be harmful if inhaled, may cause respiratory tract infection
Skin	May be harmful if absorbed through skin, may cause irritation
Eyes	May cause eye irritation
Ingestion	Harmful if swallowed



SHOWA AMERICA

At Showa America, we assist companies in a variety of industries to achieve **outstanding business results** by supplying the **highest quality chemical products**. Our **zero defects policy** provides an elevated level of excellence in every phase of production and shipping.

Chemical attraction.



SHOWA AMERICA

PO Box 565 • Williamsville, NY 14231-0565 USA • Tel +1.716.835.0200 • Fax +1.716.835.0600

Section 4 – FIRST AID MEASURES

INGESTION: If swallowed, wash out mouth with water provided person is conscious. Call a physician.

INHALATION: If inhaled, remove to fresh air. If not breathing give artificial respiration. If breathing is difficult, give oxygen.

SKIN CONTACT: In case of contact, immediately wash skin with soap and copious amounts of water.

EYE CONTACT: In case of contact, immediately flush eyes with copious amounts of water for at least 15 minutes.

Section 5 – FIRE FIGHTING MEASURES

Flammable properties

Flash point No Data Available

Ignition Temperature No Data Available

Flammability No Data Available

Suitable extinguishing media Water spray, Carbon dioxide, dry chemical powder or appropriate foam

Special protective equipment Wear self contained breathing apparatus and protective clothing to prevent contact with skin and eyes.

Specific Hazard(s) Emits toxic fumes under fire conditions.

Exposure Hazard(s) Material: Irritant

Section 6 – ACCIDENTAL RELEASE MEASURES

PERSONAL PRECAUTIONS: Wear respirator, chemical safety goggles, rubber boots and heavy rubber gloves.

METHODS FOR CLEANING UP: Sweep up, place in a bag and hold for waste disposal. Avoid raising dust. Ventilate area and wash spill site after material pickup is complete.

Section 7 – HANDLING AND STORAGE

HANDLING: Control dust generation. Do not breathe dust. Avoid contact with eyes, skin and clothing

STORAGE: Suitable: Keep tightly closed. Store in a cool dry place.

Finely powdered organic material dispersed in air can create a dust explosion hazard.

Section 8 – EXPOSURE CONTROLS/PERSONAL PROTECTION

ENGINEERING CONTROLS: Safety shower and eye bath. Mechanical exhaust required.

OSHA has set exposure limits on dust in 29CFR1010.1000 Table Z-3 at 5 mg/m³ Respirable fraction 15mg/m³ total dust

PERSONAL PROTECTION

Respiratory protection	Use respirators and components tested and approved under appropriate government standards such as NIOSH (US) or CEN (EU). Where risk assessment shows air-purifying respirators are appropriate use a dust mask type N95 (US) or type P1 (EN 143) respirator.
Hand protection	Compatible chemical-resistant gloves.
Eye protection	Chemical safety goggles
Hygiene measures	Wash thoroughly after handling. Wash contaminated clothing before reuse



SHOWA AMERICA

At Showa America, we assist companies in a variety of industries to achieve **outstanding business results** by supplying the **highest quality chemical products**. Our **zero defects policy** provides an elevated level of excellence in every phase of production and shipping.

Chemical attraction.



SHOWA AMERICA

PO Box 565 • Williamsville, NY 14231-0565 USA • Tel +1.716.835.0200 • Fax +1.716.835.0600

Section 9 – PHYSICAL AND CHEMICAL PROPERTIES

Physical Data

Appearance	Off white crystalline powder
Melting point	170 °C min
Solubility	Insoluble
Molecular Weight	248.3 AMU

Section 10 – STABILITY AND REACTIVITY

Stability	Materials to avoid: Strong oxidizing agents.
Hazardous Decomposition Products	Carbon monoxide, Carbon dioxide, Nitrogen oxides, Sulfur oxides

Section 11 – TOXICOLOGICAL INFORMATION

Route of Exposure

Inhalation: Material is irritating to mucous membranes and upper respiratory tract.

Multiple Routes: Causes eye and skin irritation. May be harmful by inhalation, ingestion and skin absorption.

Toxicity Data

Acute Data: LD50 Oral rat 4920 mg/KG

Subchronic data: No data

Section 12 – ECOLOGICAL INFORMATION

No data available

Section 13 – DISPOSAL CONSIDERATIONS

APPROPRIATE METHOD OF DISPOSAL OF SUBSTANCE OR PREPARATION

Dissolve or mix the material with a combustible solvent and burn in a chemical incinerator equipped with an afterburner and scrubber. Observe all federal, state and local environmental regulations.

Section 14 – TRANSPORT INFORMATION

DOT INFORMATION: This substance is considered to be non-hazardous for transport.

IMDG INFORMATION: Not dangerous goods.

IATA INFORMATION: Non-Hazardous for Air Transport

Section 15 – REGULATORY INFORMATION

United States	TSCA Registered
Europe	EINECS No.209-967-5
Japan	Japan Existing Chemical Substance No:(3)-2163



SHOWA AMERICA

At Showa America, we assist companies in a variety of industries to achieve **outstanding business results** by supplying the **highest quality chemical products**. Our **zero defects policy** provides an elevated level of excellence in every phase of production and shipping.

Chemical attraction.



SHOWA AMERICA

PO Box 565 • Williamsville, NY 14231-0565 USA • Tel +1.716.835.0200 • Fax +1.716.835.0600

Section 16 – OTHER INFORMATION

MSDS creation date February 15, 1996
Latest revision date March 12, 2010

IMPORTANT: The information presented herein, while not guaranteed, was prepared by competent technical personnel and is true and accurate to the best of our knowledge. NO WARRANTY OF MERCHANTABILITY OR FITNESS FOR PURPOSE, OR OF ANY OTHER KIND, EXPRESSED OR IMPLIED, IS MADE REGARDING PERFORMANCE, STABILITY OR OTHERWISE. This information is not intended to be all-inclusive as to the manner and conditions of use, handling and storage. Other factors may involve other or additional safety or performance considerations. While our technical personnel will be happy to respond to questions regarding safe handling and use procedures, safe handling and use remains the responsibility of the customer. No suggestions for use are intended as, and nothing herein shall be construed as a recommendation to infringe any existing patents or violate any federal, state or local laws, rules, regulations or ordinances.



SHOWA AMERICA

At Showa America, we assist companies in a variety of industries to achieve **outstanding business results** by supplying the **highest quality chemical products**. Our **zero defects policy** provides an elevated level of excellence in every phase of production and shipping.

Chemical attraction.

www.showa-america.com • sales@showa-america.com

